

HONGPU GONIOPHOTOMETERS SYSTEM TEST REPORT

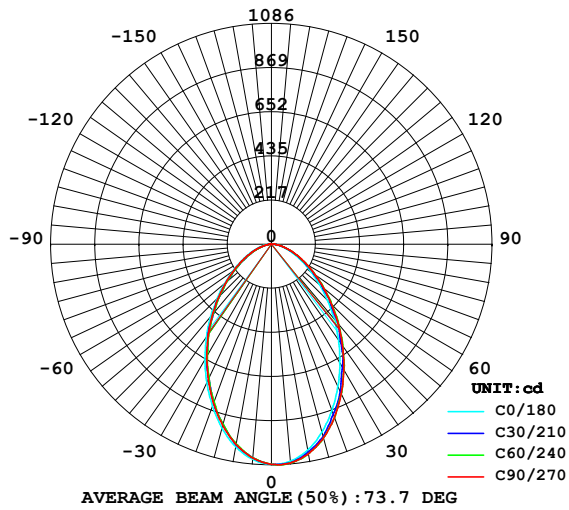
LUMINAIRE PHOTOMETRIC TEST REPORT

Report number:

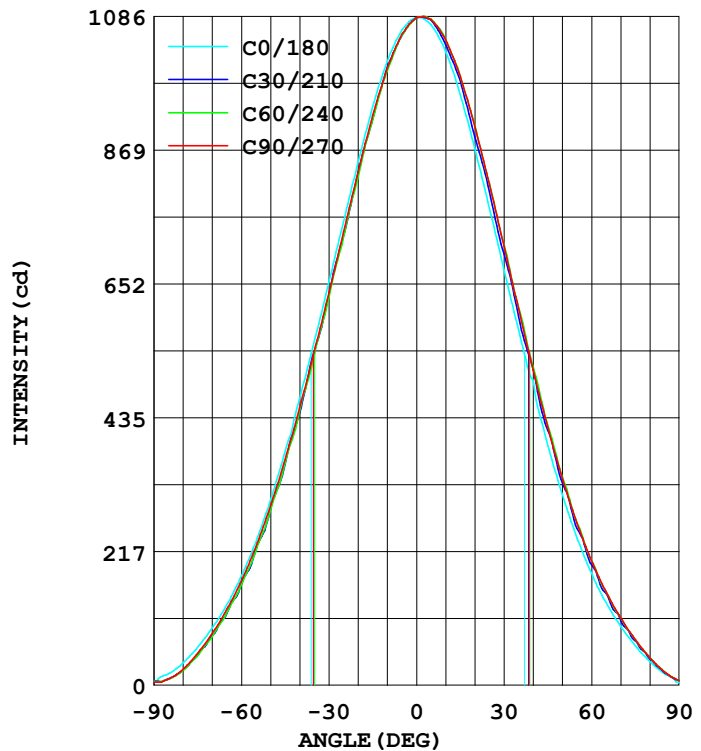
MANUFACTURER:		Address:	
NAME:		TYPE:	WEIGHT:
SPECIFICATION:		DIMENSION:	SERIAL No.:

DATA OF LAMP		Imax (cd)	1086	S/MH (C0/180)	0.96
MODEL		EFFICIENCY (%)	100.0	S/MH (C90/270)	0.95
NOMINAL POWER (W)	32	TOTAL FLUX (lm)	1813.5	Voltage (V)	219.6
RATED VOLTAGE (V)	220	EFFICIENCY (lm/W)	56.6	Current (A)	0.177
NOMINAL FLUX (lm)	1813.5	η up (%)	0.0	Power (W)	32.04
LAMPS QUANTITY	1	η down (%)	100.0	Power Factor (PF)	0.822
TEST VOLTAGE (V)	219.6	Effective Flux (lm)	1709.4	EEL	0.255

LUMINOUS INTENSITY DISTRIBUTION



LUMINOUS INTENSITY DISTRIBUTION



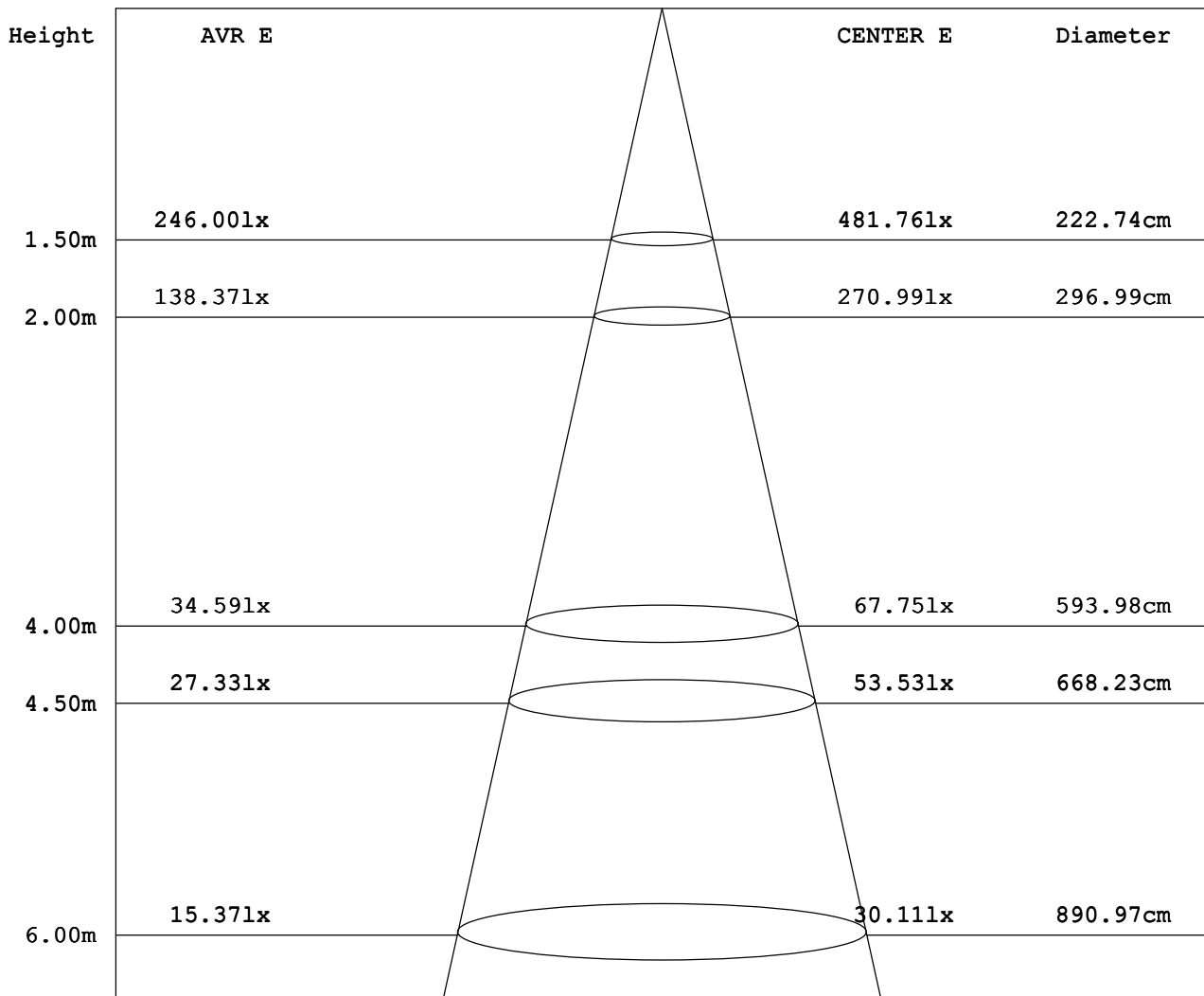
Test System:HOPOO HPG1900
 Temperature:25.3DEG
 Operators:
 Test Date:2014年03月07日

Test Set: 5.0deg/s B-Beta (TYPE B)
 Humidity:65.0%
 Test Distance:13.000 m
 Remarks:

AVERAGE AND CENTER E Figure

Report number:

MANUFACTURER:	Address:	
NAME:	TYPE:	WEIGHT:
SPECIFICATION:	DIMENSION:	SERIAL No.:



Angle:73.2deg

Test System:HOPOO HPG1900
 Temperature:25.3DEG
 Operators:
 Test Date:2014年03月07日

Test Set: 5.0deg/s B-Beta (TYPE B)
 Humidity:65.0%
 Test Distance:13.000 m
 Remarks:

HONGPU GONIOPHOTOMETERS SYSTEM TEST REPORT

ZONAL FLUX DIAGRAM

Report number:

MANUFACTURER:	Address:	
NAME:	TYPE:	WEIGHT:
SPECIFICATION:	DIMENSION:	SERIAL No.:

γ	C0	C45	C90	C135	C180	C225	C270	C315	γ	Φ zone	Φ total
5.0	1064	1054	1057	1063	1072	1080	1081	1071	0- 5	25.70	25.70
10.0	1013	997.2	1002	1015	1029	1047	1048	1029	5- 10	74.73	100.4
15.0	939.6	920.5	925.2	939.0	958.5	982.8	988.8	964.2	10- 15	117.0	217.4
20.0	849.5	829.1	833.3	848.8	871.7	899.8	907.5	879.3	15- 20	149.5	367.0
25.0	752.3	727.6	735.9	754.4	774.0	809.1	813.5	777.9	20- 25	170.9	537.9
30.0	655.5	628.6	637.4	656.8	673.8	710.9	712.6	675.2	25- 30	181.5	719.4
35.0	559.2	536.6	542.8	558.0	577.1	609.5	611.2	580.5	30- 35	182.2	901.7
40.0	465.9	447.1	451.3	462.9	495.0	510.4	511.9	487.5	35- 40	174.6	1076
45.0	380.2	363.6	367.2	375.7	389.8	416.5	419.1	401.5	40- 45	159.8	1236
50.0	301.3	286.3	291.3	298.6	309.9	332.8	335.6	321.6	45- 50	140.6	1377
55.0	232.8	219.5	225.4	232.1	239.1	260.1	263.1	251.8	50- 55	119.0	1496
60.0	177.4	163.2	169.6	177.0	182.0	199.3	201.9	191.9	55- 60	97.33	1593
65.0	130.9	116.3	123.2	131.3	134.1	150.0	151.2	141.1	60- 65	76.73	1670
70.0	92.61	78.30	84.16	92.71	95.31	109.0	109.5	99.80	65- 70	57.86	1728
75.0	61.68	48.75	51.71	58.46	64.38	72.71	74.19	67.70	70- 75	40.83	1769
80.0	36.16	24.36	25.85	31.58	38.36	44.02	44.61	39.44	75- 80	25.77	1795
85.0	18.59	9.596	10.13	13.56	18.59	21.84	21.63	17.30	80- 85	13.45	1808
90.0	6.929	6.422	5.070	6.591	4.394	7.436	7.605	5.239	85- 90	5.548	1814
95.0									90- 95		
100.0									95-100		
105.0									100-105		
110.0									105-110		
115.0									110-115		
120.0									115-120		
125.0									120-125		
130.0									125-130		
135.0									130-135		
140.0									135-140		
145.0									140-145		
150.0									145-150		
155.0									150-155		
160.0									155-160		
165.0									160-165		
170.0									165-170		
175.0									170-175		
180.0									175-180		
DEG	LUMINOUS INTENSITY:cd									UNIT:lm	

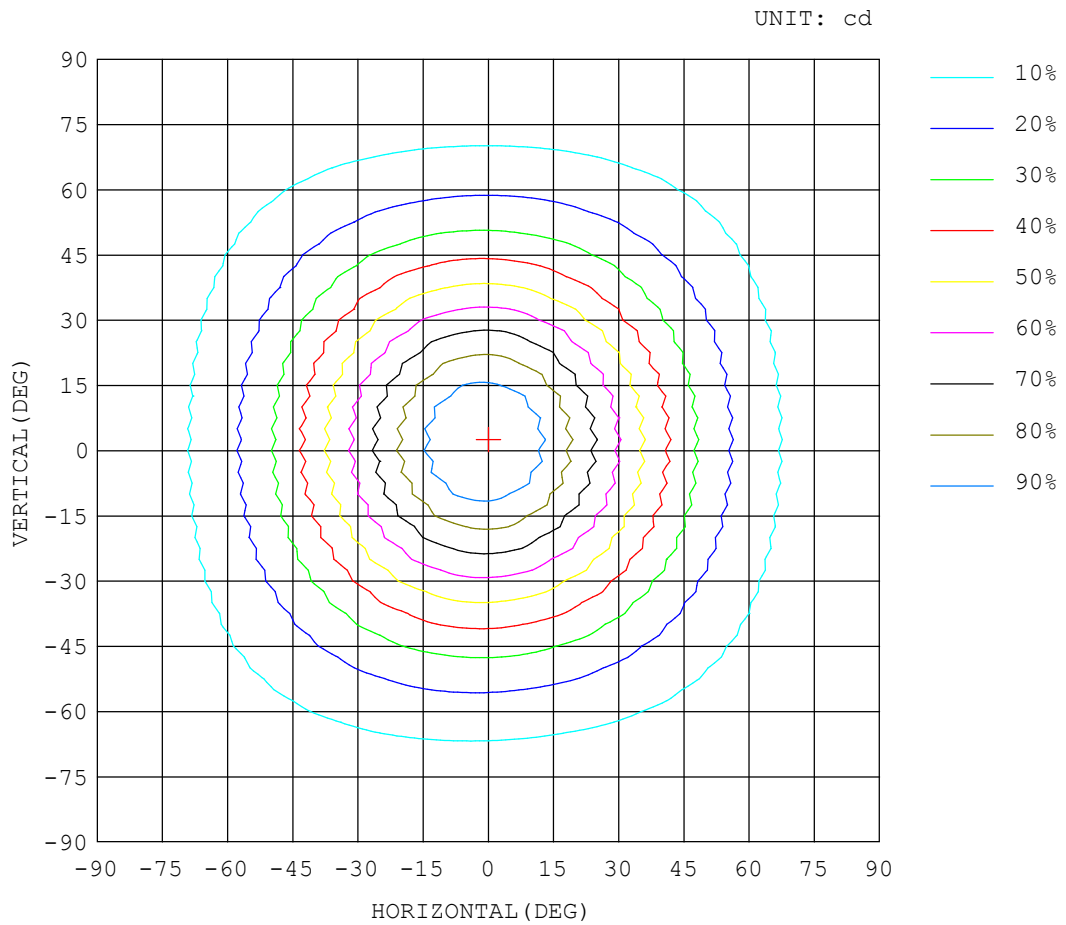
Test System:HOPOO HPG1900
 Temperature:25.3DEG
 Operators:
 Test Date:2014年03月07日

Test Set: 5.0deg/s B-Beta (TYPE B)
 Humidity:65.0%
 Test Distance:13.000 m
 Remarks:

ISOCANDELA DIAGRAM

Report number:

MANUFACTURER:	Address:	
NAME:	TYPE:	WEIGHT:
SPECIFICATION:	DIMENSION:	SERIAL No.:



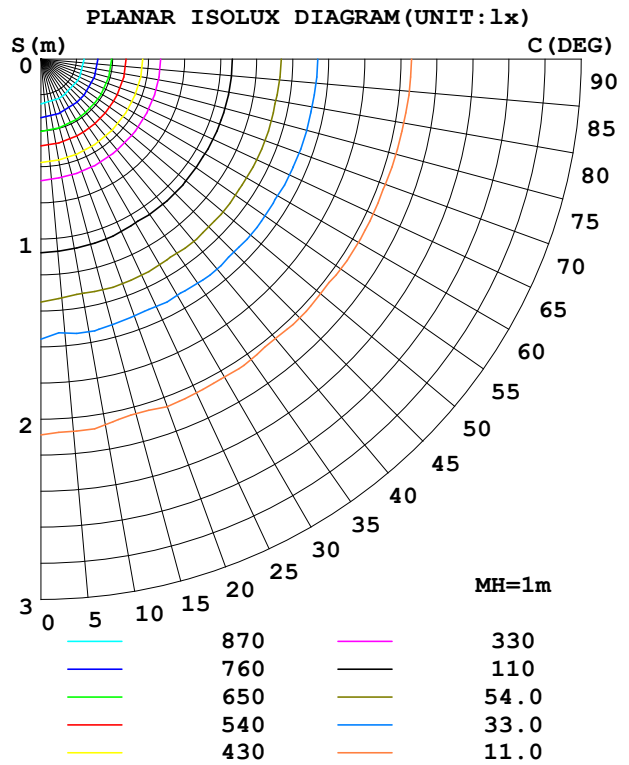
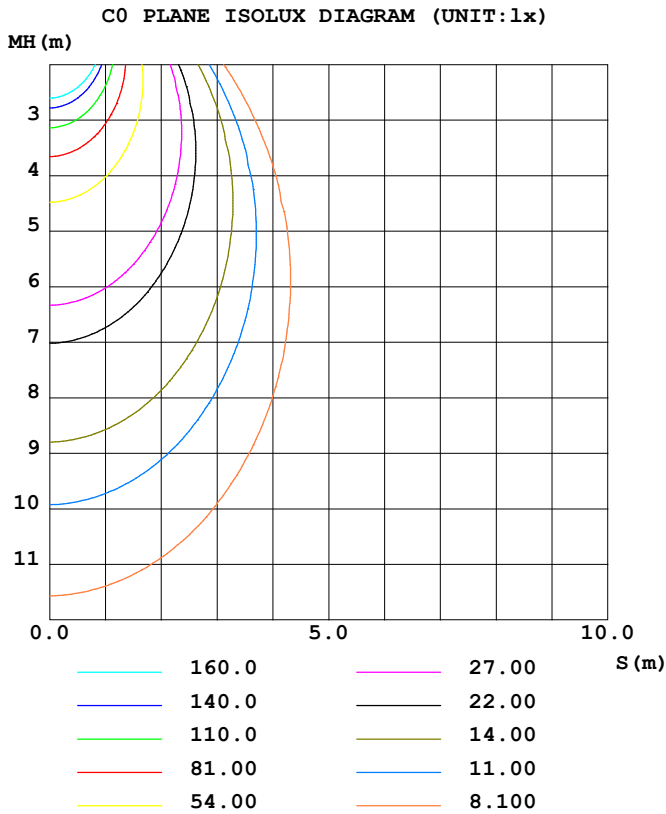
Test System:HOPOO HPG1900
 Temperature:25.3DEG
 Operators:
 Test Date:2014年03月07日

Test Set: 5.0deg/s B-Beta (TYPE B)
 Humidity:65.0%
 Test Distance:13.000 m
 Remarks:

ISOLUX DIAGRAM

Report number:

MANUFACTURER:	Address:	
NAME:	TYPE:	WEIGHT:
SPECIFICATION:	DIMENSION:	SERIAL No.:



Test System:HOPOO HPG1900
 Temperature:25.3DEG
 Operators:
 Test Date:2014年03月07日

Test Set: 5.0deg/s B-Beta (TYPE B)
 Humidity:65.0%
 Test Distance:13.000 m
 Remarks:

HONGPU GONIOPHOTOMETERS SYSTEM TEST REPORT

LUMINOUS DISTRIBUTION INTENSITY DATA

Report number:

MANUFACTURER:	Address:	
NAME:	TYPE:	WEIGHT:
SPECIFICATION:	DIMENSION:	SERIAL No.:

UNIT: cd

γ (DEG)	C (DEG)														
	0	5	10	15	20	25	30	35	40	45	50	55	60	65	70
0.0	1084	1084	1084	1084	1084	1084	1084	1084	1084	1084	1084	1084	1084	1084	1084
5.0	1064	1061	1059	1058	1057	1056	1055	1054	1054	1054	1054	1054	1055	1055	1055
10.0	1013	1008	1004	1002	1002	1003	1003	1000	998	997	997	997	998	998	999
15.0	940	931	926	928	929	923	919	921	923	921	918	917	918	919	921
20.0	850	839	838	839	830	832	833	827	826	829	829	826	825	826	828
25.0	752	739	745	736	737	734	730	736	728	728	731	730	728	728	730
30.0	656	641	645	639	638	636	635	632	636	629	631	633	630	629	632
35.0	559	548	543	549	541	540	542	536	539	537	534	539	536	534	537
40.0	466	459	452	446	452	452	442	448	443	447	441	448	446	443	445
45.0	380	378	374	370	365	358	360	365	356	364	356	361	361	358	361
50.0	301	294	287	284	282	283	286	286	279	286	279	285	285	283	285
55.0	233	221	224	226	221	219	221	219	214	220	214	219	219	217	219
60.0	177	169	166	168	167	164	164	165	160	163	161	164	163	162	164
65.0	131	126	125	122	120	116	116	118	117	116	117	118	117	117	119
70.0	92.6	86.0	87.2	85.8	80.7	82.2	80.7	78.1	80.6	78.3	80.2	79.8	78.7	79.6	80.6
75.0	61.6	54.1	52.3	53.0	50.3	48.7	49.0	50.1	47.6	48.7	48.8	48.0	47.9	48.6	49.0
80.0	36.1	31.0	30.2	27.9	25.3	24.6	25.4	24.1	24.6	24.3	23.9	23.8	24.1	24.2	24.4
85.0	18.5	15.0	11.4	11.1	10.9	10.3	10.4	10.1	9.86	9.59	9.68	9.67	9.71	9.82	9.87
90.0	6.92	5.23	6.76	6.76	6.76	6.76	6.59	6.59	6.59	6.42	6.42	6.25	6.08	5.74	5.40

Test System:HOPOO HPG1900
 Temperature:25.3DEG
 Operators:
 Test Date:2014年03月07日

Test Set: 5.0deg/s B-Beta (TYPE B)
 Humidity:65.0%
 Test Distance:13.000 m
 Remarks:

HONGPU GONIOPHOTOMETERS SYSTEM TEST REPORT

LUMINOUS DISTRIBUTION INTENSITY DATA

Report number:

MANUFACTURER:	Address:	
NAME:	TYPE:	WEIGHT:
SPECIFICATION:	DIMENSION:	SERIAL No.:

UNIT: cd

γ (DEG)	C (DEG)														
	75	80	85	90	95	100	105	110	115	120	125	130	135	140	145
0.0	1084	1084	1084	1084	1084	1084	1084	1084	1084	1084	1084	1084	1084	1084	1084
5.0	1056	1056	1056	1057	1057	1058	1058	1059	1059	1060	1061	1062	1063	1064	1066
10.0	999	1000	1001	1002	1003	1003	1004	1005	1007	1009	1010	1013	1015	1015	1016
15.0	922	923	924	925	926	927	928	930	932	935	938	938	939	941	944
20.0	830	831	832	833	834	836	838	840	843	846	847	847	849	855	857
25.0	732	733	734	736	737	738	740	743	746	748	748	748	754	757	754
30.0	633	635	636	637	638	640	642	644	647	648	647	652	657	653	661
35.0	539	540	542	543	544	545	547	550	552	552	551	557	558	559	565
40.0	448	449	450	451	452	454	456	458	461	460	460	467	463	469	467
45.0	363	365	366	367	368	370	372	374	376	375	376	381	376	385	378
50.0	287	289	290	291	293	294	296	298	300	298	299	304	299	307	302
55.0	221	223	224	225	227	228	230	231	233	232	232	237	232	239	235
60.0	166	167	168	170	171	172	173	175	176	176	175	179	177	180	176
65.0	120	121	122	123	124	125	126	128	129	129	128	130	131	131	131
70.0	81.6	82.4	83.2	84.1	85.0	85.8	86.8	87.8	88.9	89.9	89.8	90.1	92.7	91.2	95.0
75.0	49.6	50.2	50.7	51.7	52.0	52.9	53.7	54.5	55.4	56.5	57.1	57.4	58.4	60.3	59.2
80.0	24.6	25.0	25.3	25.8	26.2	26.9	27.4	28.2	28.9	29.6	30.4	31.1	31.5	32.1	33.9
85.0	9.97	9.96	10.0	10.1	10.1	9.85	10.4	10.9	11.4	11.9	12.7	13.2	13.5	14.0	14.7
90.0	5.23	5.07	5.07	5.07	5.07	5.07	5.07	5.23	5.57	6.25	6.59	6.59	6.59	6.42	6.76

Test System:HOPOO HPG1900
 Temperature:25.3DEG
 Operators:
 Test Date:2014年03月07日

Test Set: 5.0deg/s B-Beta (TYPE B)
 Humidity:65.0%
 Test Distance:13.000 m
 Remarks:

HONGPU GONIOPHOTOMETERS SYSTEM TEST REPORT

LUMINOUS DISTRIBUTION INTENSITY DATA

Report number:

MANUFACTURER:	Address:	
NAME:	TYPE:	WEIGHT:
SPECIFICATION:	DIMENSION:	SERIAL No.:

UNIT: cd

C (DEG) \ γ (DEG)	150	155	160	165	170	175	180	185	190	195	200	205	210	215	220
0.0	1084	1084	1084	1084	1084	1084	1084	1084	1084	1084	1084	1084	1084	1084	1084
5.0	1068	1068	1068	1069	1070	1071	1072	1073	1074	1075	1077	1078	1080	1080	1080
10.0	1018	1020	1023	1027	1027	1027	1029	1031	1035	1039	1038	1039	1040	1042	1044
15.0	950	950	949	954	961	960	959	965	972	969	970	976	981	980	980
20.0	855	861	867	863	870	875	872	881	883	882	891	891	891	898	901
25.0	763	763	765	773	769	781	774	788	783	792	791	795	801	798	807
30.0	661	664	668	672	671	682	674	689	684	692	694	697	700	705	702
35.0	562	568	572	568	580	581	577	588	593	587	597	600	599	608	605
40.0	477	469	482	485	484	482	495	496	498	503	500	501	512	506	514
45.0	385	390	387	386	386	387	390	393	396	400	406	410	414	412	415
50.0	303	309	313	315	315	313	310	317	324	329	331	331	329	331	339
55.0	234	238	239	236	242	248	239	252	249	247	253	256	255	258	266
60.0	179	181	180	182	187	187	182	189	193	190	191	195	196	195	202
65.0	135	136	135	135	134	135	134	137	138	142	144	148	149	147	148
70.0	93.8	94.1	97.3	94.5	95.3	99.8	95.3	102	99.4	101	106	104	105	109	106
75.0	61.9	63.9	64.4	63.9	67.2	68.5	64.3	70.6	71.3	69.7	71.7	72.8	72.1	70.4	73.6
80.0	33.9	36.0	37.3	36.4	37.2	40.1	38.3	42.1	41.0	41.5	43.7	43.9	42.6	44.1	43.4
85.0	14.8	15.8	15.6	16.1	18.1	17.3	18.5	19.6	20.9	20.1	20.0	20.8	20.4	21.1	21.4
90.0	6.76	5.07	5.07	5.57	7.26	5.74	4.39	3.71	7.09	7.26	7.43	7.43	7.60	7.60	7.60

Test System:HOPOO HPG1900
 Temperature:25.3DEG
 Operators:
 Test Date:2014年03月07日

Test Set: 5.0deg/s B-Beta (TYPE B)
 Humidity:65.0%
 Test Distance:13.000 m
 Remarks:

HONGPU GONIOPHOTOMETERS SYSTEM TEST REPORT

LUMINOUS DISTRIBUTION INTENSITY DATA

Report number:

MANUFACTURER:	Address:	
NAME:	TYPE:	WEIGHT:
SPECIFICATION:	DIMENSION:	SERIAL No.:

UNIT: cd

C (DEG) \ γ (DEG)	225	230	235	240	245	250	255	260	265	270	275	280	285	290	295
0.0	1084	1084	1084	1084	1084	1084	1084	1084	1084	1084	1084	1084	1084	1084	1084
5.0	1080	1080	1081	1081	1081	1081	1082	1082	1081	1081	1080	1080	1079	1078	1077
10.0	1047	1048	1048	1048	1048	1049	1049	1049	1049	1048	1047	1046	1044	1042	1040
15.0	983	986	989	989	989	990	989	989	989	989	987	986	983	980	976
20.0	900	903	907	910	909	909	909	909	908	908	906	904	901	897	892
25.0	809	807	810	814	816	815	815	815	814	814	812	809	806	801	795
30.0	711	710	709	715	718	716	715	715	714	713	711	708	705	700	694
35.0	610	613	609	614	617	616	615	614	613	611	609	607	603	598	593
40.0	510	518	514	516	519	518	516	514	513	512	510	508	505	501	496
45.0	417	418	422	422	425	424	423	421	420	419	418	416	413	410	406
50.0	333	341	338	338	341	340	338	337	336	336	335	334	332	329	325
55.0	260	267	263	265	267	266	265	264	263	263	263	262	261	259	256
60.0	199	204	200	203	204	203	202	202	202	202	202	202	201	199	196
65.0	150	150	149	152	152	152	151	151	151	151	151	151	151	149	147
70.0	109	107	108	109	109	109	109	109	109	110	109	109	109	108	106
75.0	72.7	72.7	73.8	74.0	74.1	74.0	73.9	74.0	74.1	74.1	74.2	74.0	73.5	72.7	71.6
80.0	44.0	44.7	44.9	44.9	44.8	44.9	44.8	44.7	44.6	44.6	44.6	44.2	44.0	43.3	42.5
85.0	21.8	21.9	21.9	21.8	21.8	21.8	21.8	21.7	21.7	21.6	21.3	21.0	20.7	20.4	19.8
90.0	7.43	7.43	7.60	7.60	7.26	6.76	6.76	6.92	7.43	7.60	7.09	6.42	5.91	5.74	6.25

Test System:HOPOO HPG1900
 Temperature:25.3DEG
 Operators:
 Test Date:2014年03月07日

Test Set: 5.0deg/s B-Beta (TYPE B)
 Humidity:65.0%
 Test Distance:13.000 m
 Remarks:

HONGPU GONIOPHOTOMETERS SYSTEM TEST REPORT

LUMINOUS DISTRIBUTION INTENSITY DATA

Report number:

MANUFACTURER:	Address:	
NAME:	TYPE:	WEIGHT:
SPECIFICATION:	DIMENSION:	SERIAL No.:

UNIT: cd

C (DEG) \ γ (DEG)	300	305	310	315	320	325	330	335	340	345	350	355
0.0	1084	1084	1084	1084	1084	1084	1084	1084	1084	1084	1084	1084
5.0	1075	1074	1073	1071	1070	1069	1067	1066	1065	1064	1064	1064
10.0	1037	1034	1031	1029	1027	1026	1026	1022	1017	1014	1012	1012
15.0	972	968	966	964	962	956	949	948	950	944	937	937
20.0	887	884	883	879	871	867	868	861	853	857	850	845
25.0	791	790	787	778	774	777	765	764	761	754	757	745
30.0	692	691	683	675	678	670	668	663	660	655	657	646
35.0	591	591	582	581	578	569	572	565	562	565	553	553
40.0	496	495	488	488	484	481	471	476	471	461	462	464
45.0	406	404	396	402	390	396	386	381	383	384	384	382
50.0	326	324	317	322	310	315	312	305	299	297	296	298
55.0	257	255	248	252	243	246	245	240	238	239	233	225
60.0	197	197	191	192	186	190	185	182	182	179	173	173
65.0	147	147	143	141	140	139	134	132	133	132	132	130
70.0	104	104	104	99.8	101	96.0	97.1	96.5	92.5	95.3	93.9	89.4
75.0	69.8	69.1	69.0	67.7	64.7	66.4	63.1	60.9	60.7	61.5	58.2	57.4
80.0	41.5	40.3	39.6	39.4	38.7	36.6	37.1	34.5	33.8	35.3	35.6	34.1
85.0	19.4	18.8	18.1	17.3	16.7	16.5	16.2	15.2	15.4	14.9	14.6	17.2
90.0	6.08	5.74	5.57	5.23	5.23	5.23	4.56	4.22	4.22	4.22	4.05	2.19

Test System:HOPOO HPG1900
 Temperature:25.3DEG
 Operators:
 Test Date:2014年03月07日

Test Set: 5.0deg/s B-Beta (TYPE B)
 Humidity:65.0%
 Test Distance:13.000 m
 Remarks: